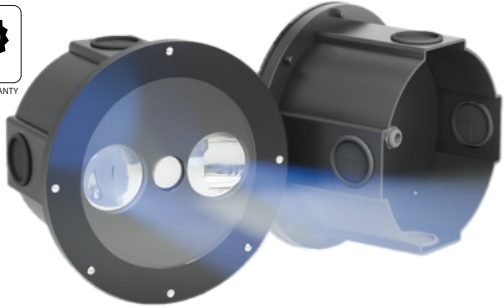
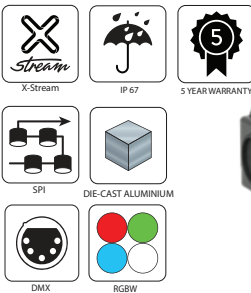


BXC | In-Ground CORRIDOR LIGHT

The BXC In-Ground Corridor Light is engineered for discreet integration along pathways, entrances, and public-realm edges, providing seamless illumination without visible fixtures. Its tri-optic system combines dual wall-wash outputs with a defined centre beam for clear, directional guidance.

Offering RGBW/RGBW/RGBL side engines and selectable White CCTs in the centre, it supports both functional and atmospheric lighting. The corridor driver ensures stable and uniform control across all outputs.

Constructed from die-cast aluminium with tempered glass and rated IP67, the in-ground variant is designed to withstand moisture, ingress, and outdoor environmental stresses while delivering long-term reliability.



PART NUMBER CONFIGURATOR

| Prefix | Model | LED Colour | White CCT | Control | Power |
|--------|--------------------------|--|---|---|----------------------|
| BXC | RIG – Recessed In-Ground | RGBW RGBA RGBL RGB W – White (24K – 60K) | 24K – 2400K 27K – 2700K 30K – 3000K 40K – 4000K 60K – 6000K | D – DMX R – RDM DA – DALI X – X-Stream | 15 – 15W 30 – 30W |

Example: BXC – RIG – RGBW – 30K – D – 15

SPECIFICATIONS (Recessed In-Ground)

| | | |
|---------------------------------|---|--|
| Electrical | Power Consumption Operating Temperature Storage Temperature | 15W OR 30W -20°C TO 50°C – (-4°F TO 122°F) -20°C TO 70°C – (-4°F TO 158°F) |
| Physical | Dimensions Housing IP Rating Source Life Connection | Dia. 260mm x 154mm (H) Die-casting aluminium plus tempered glass IP67 50,000 ≈ 70,000 hours/L70 at 25°C 8-pin cable |
| Optical | Beam Angle Colour Range LED Type | Left/Right side – Wall Wash Beam Angle / Center – Spot Beam Angle Left Side – 4-in-1 RGBW or RGBA or RGBL Center – Amber/2400K/2700K/3000K/4000K/6000K Right Side – 4-in-1 RGBW or RGBA or RGB High Power LEDs |
| Diming & Control | Dimming Protocols Controlled | DMX, RDM, DALI, X-Stream Current design and only can be Driven by Corridor Driver |
| Fixture Rating & Certifications | CE | |
| Limited Warranty | 5 Years | Extendable Warranty Available |

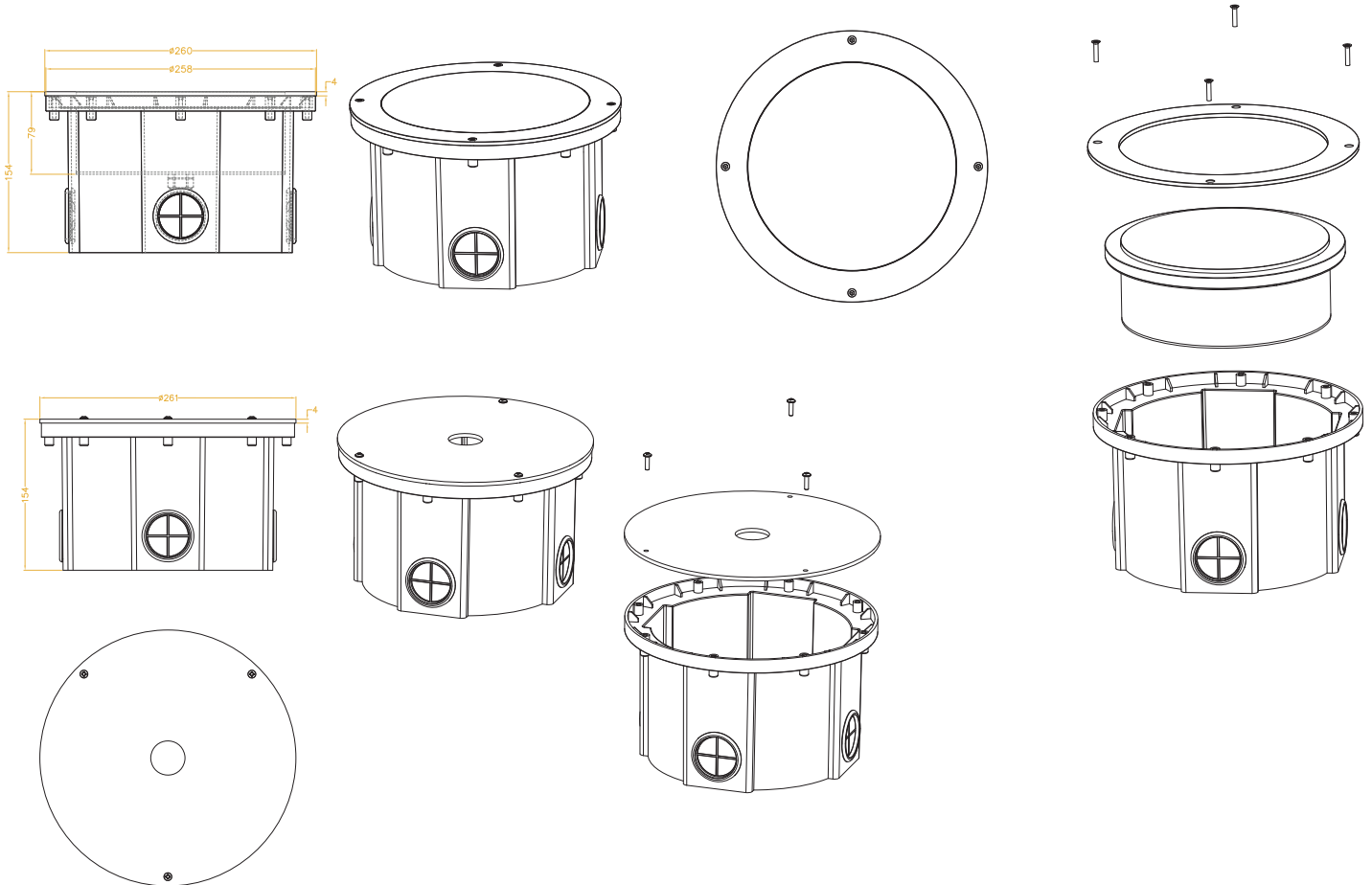
SPECIFICATIONS (Light Driver)

| | | |
|------------------|---------------------------------------|--|
| Electrical | Power In Output | 100≈277V 5W/10W option by RDM setup |
| Physical | Dimensions Connection IP Rating | 189mm(L) x 65mm (W) x 52mm (H) 6-pin AC/DMX cable input c/w bare end IP 20 |
| Diming & Control | Controlled | DMX/RDM, addressed by RDM tester, 9 DMX Channels |

BXC | In-Ground CORRIDOR LIGHT

DIMENSIONS AND MOUNTING

DIMENSIONS – RECESSED IN-GROUND



DIMENSIONS – LIGHT DRIVER

