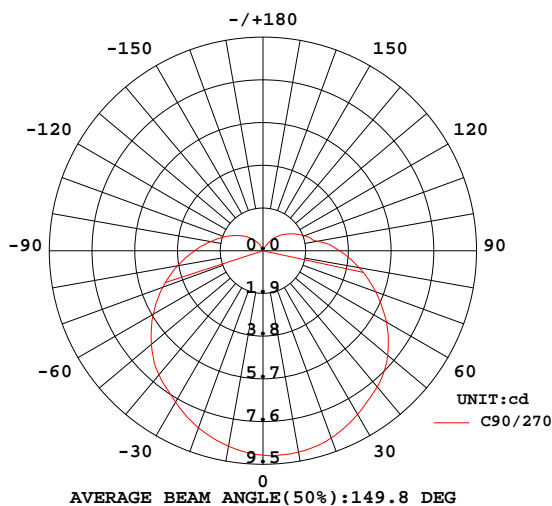


LUMINAIRE PHOTOMETRIC TEST REPORT

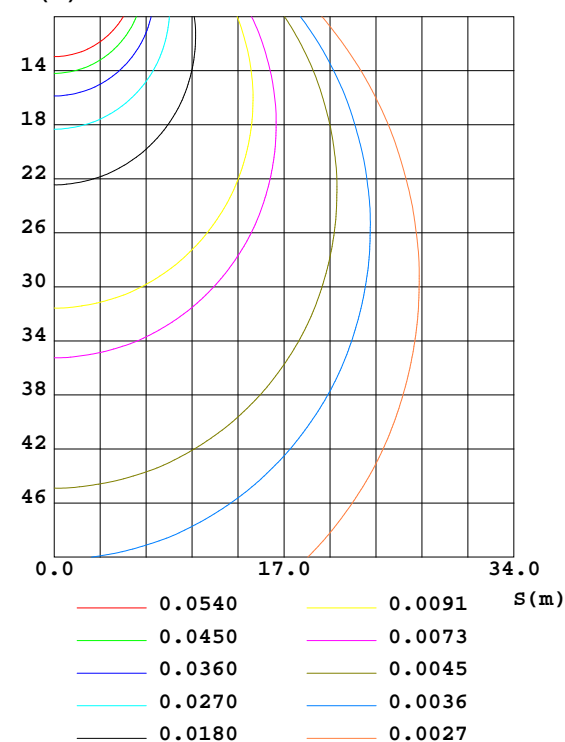
NAME: C-SFR-F21S-HB-D24CC-RGBW(4000K)-56-5050-1M-B	WEIGHT:0.490KG/M
DIM.: 11.5*29mm	SPEC.:
MFR.:	SUR.:16*1000mm
	PROTECTION ANGLE:/

DATA OF LAMP		PHOTOMETRIC DATA				Eff: 7.75 lm/W
MODEL	5050	Imax(cd)	9.128	S/MH(C0/180)	1.21	
NOMINAL POWER(W)	4.7	LOR(%)	121.5	S/MH(C90/270)	1.28	
RATED VOLTAGE(V)	24	TOTAL FLUX(lm)	36.436	η UP,DN(C0-180)	7.5,51.1	
NOMINAL FLUX(lm)	30	CIE CLASS	SEMI-D.	η UP,DN(C180-360)	8.1,54.7	
LAMPS INSIDE	1	η up(%)	15.6	CIBSE SHR NOM	1.50	
TEST VOLTAGE(V)	24	η down(%)	105.9	CIBSE SHR MAX	1.50	

LUMINOUS INTENSITY DISTRIBUTION DIAGRAM



C0 PLANE ISOLUX DIAGRAM (UNIT:lx)



C Range: 0 - 360DEG  
C Interval: 30.0DEG  
Test Speed: HIGH  
Temperature:25.3DEG  
Operators:shan  
Test Date:2018-09-13

γ Range: 0 - 180DEG  
γ Interval: 2.0DEG  
Test System:EVERFINE GO-2000A\_V1 SYSTEM V1.0.257  
Humidity:45.0%  
Test Distance:6.950m [K=1.0000]  
Remarks:

## ZONAL FLUX DIAGRAM

### ZONAL FLUX DIAGRAM:

$\gamma$	C0	C45	C90	C135	C180	C225	C270	C315	$\gamma$	$\Phi$ zone	$\Phi$ total	%lum, lamp
10	8.887	8.808	8.829	8.882	8.929	9.058	9.089	8.987	0- 10	0.8601	0.8601	2.36,2.87
20	8.285	8.256	8.385	8.385	8.380	8.708	8.864	8.580	10- 20	2.467	3.328	9.13,11.1
30	7.375	7.492	7.771	7.653	7.505	8.067	8.410	7.895	20- 30	3.759	7.087	19.5,23.6
40	6.188	6.596	7.203	6.772	6.333	7.224	7.912	7.051	30- 40	4.604	11.69	32.1,39
50	4.834	5.648	6.480	5.843	5.018	6.301	7.240	6.091	40- 50	4.977	16.67	45.7,55.6
60	3.414	4.663	5.632	4.857	3.601	5.259	6.341	5.051	50- 60	4.853	21.52	59.1,71.7
70	1.982	3.651	4.746	3.866	2.162	4.187	5.335	3.943	60- 70	4.304	25.82	70.9,86.1
80	0.5618	2.705	3.848	2.908	0.7454	3.138	4.332	2.912	70- 80	3.442	29.27	80.3,97.6
90	0	1.930	3.040	2.081	0	2.238	3.410	2.060	80- 90	2.495	31.76	87.2,106
100	0	1.391	2.367	1.322	0	1.379	2.454	1.477	90-100	1.780	33.54	92.1,112
110	0	1.007	1.823	0.8579	0	0.8839	1.960	1.094	100-110	1.198	34.74	95.3,116
120	0	0.7230	1.368	0.5500	0	0.5808	1.513	0.8091	110-120	0.8075	35.55	97.6,118
130	0	0.4704	0.9794	0.2363	0	0.2680	1.112	0.6000	120-130	0.4972	36.04	98.9,120
140	0	0.2605	0.6567	0.0756	0	0.0834	0.6654	0.3832	130-140	0.2631	36.31	99.6,121
150	0	0.0992	0.3379	0	0	0	0.2879	0.1780	140-150	0.1048	36.41	99.9,121
160	0	0.0000	0.0387	0	0	0	0	0.0483	150-160	0.0229	36.44	100,121
170	0	0	0	0	0	0	0	0	160-170	0.0007	36.44	100,121
180	0	0	0	0	0	0	0	0	170-180	0	36.44	100,121
DEG	LUMINOUS INTENSITY:cd									UNIT:lm		

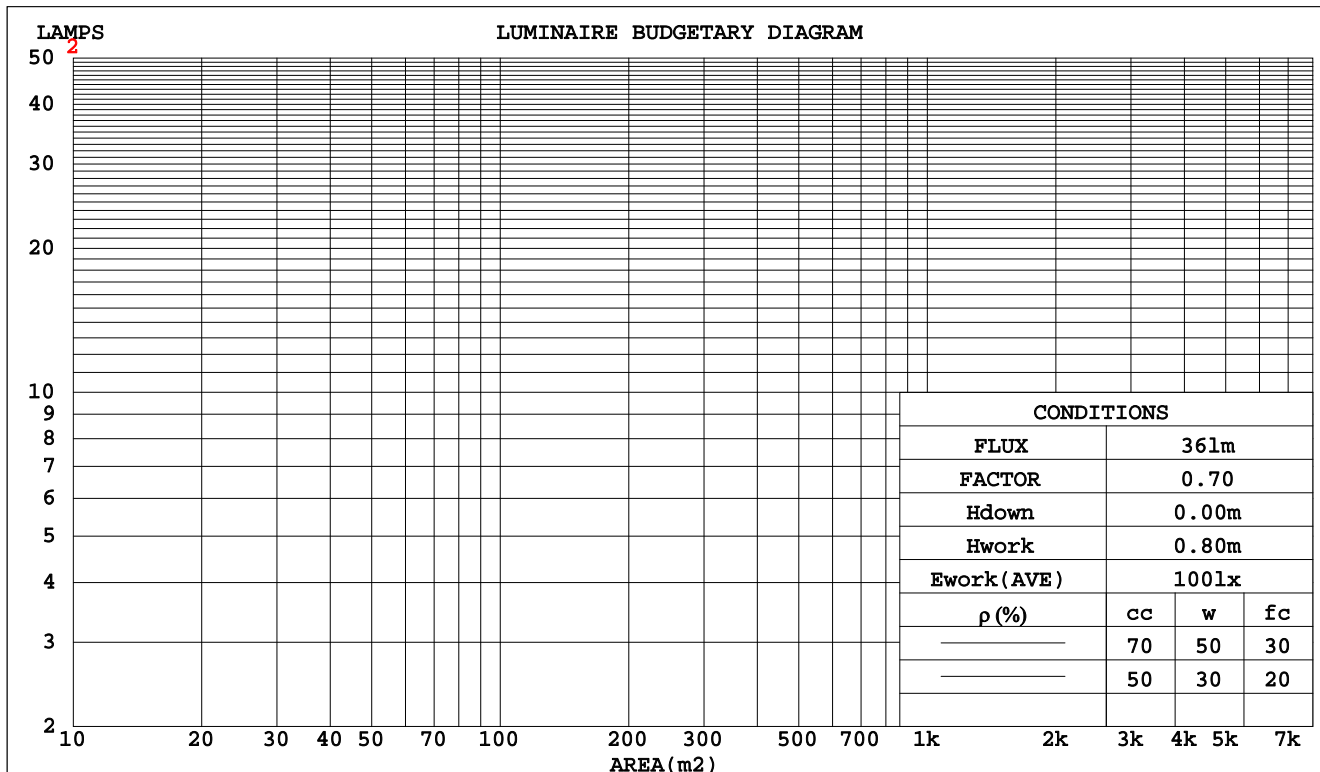
C Range: 0 - 360DEG  
C Interval: 30.0DEG  
Test Speed: HIGH  
Temperature:25.3DEG  
Operators:shan  
Test Date:2018-09-13

$\gamma$  Range: 0 - 180DEG  
 $\gamma$  Interval: 2.0DEG  
Test System:EVERFINE GO-2000A\_V1 SYSTEM V1.0.257  
Humidity:45.0%  
Test Distance:6.950m [K=1.0000]  
Remarks:

CU AND LUMINAIRE BUDGETARY ESTIMATE DIAGRAM

NAME: C-SFR-F21S-HB-D24CC-RGBW(4000K)-56-5050-1M-B	WEIGHT:0.490KG/M
DIM.: 11.5*29mm	SPEC.:
MFR.:	SUR.:16*1000mm
	PROTECTION ANGLE:/

pcc	80%			70%			50%			30%			10%			0
pw	50%	30%	10%	50%	30%	10%	50%	30%	10%	50%	30%	10%	50%	30%	10%	0
pfc	20%			20%			20%			20%			20%			0
RCR	Coefficients of Utilization(CU)															
0.0	1.41	1.41	1.41	1.36	1.36	1.36	1.26	1.26	1.26	1.18	1.18	1.18	1.10	1.10	1.10	1.06
1.0	1.18	1.12	1.06	1.14	1.08	1.03	1.06	1.01	.97	.98	.94	.91	.91	.88	.85	.82
2.0	1.01	.92	.84	.98	.89	.82	.91	.84	.77	.84	.78	.73	.78	.74	.69	.66
3.0	.88	.77	.68	.85	.75	.67	.79	.71	.64	.73	.66	.61	.68	.63	.58	.54
4.0	.77	.66	.57	.75	.64	.56	.70	.61	.53	.65	.57	.51	.60	.54	.49	.45
5.0	.69	.57	.49	.66	.56	.48	.62	.53	.46	.58	.50	.44	.54	.47	.42	.39
6.0	.62	.50	.42	.60	.49	.41	.56	.47	.40	.52	.44	.38	.49	.42	.37	.34
7.0	.56	.45	.37	.54	.44	.36	.51	.42	.35	.47	.40	.34	.45	.38	.32	.30
8.0	.51	.40	.33	.49	.39	.32	.46	.37	.31	.43	.36	.30	.41	.34	.29	.26
9.0	.46	.36	.29	.45	.35	.29	.42	.34	.28	.40	.32	.27	.38	.31	.26	.23
10.0	.43	.33	.26	.41	.32	.26	.39	.31	.25	.37	.30	.24	.35	.28	.23	.21



C Range: 0 - 360DEG  
C Interval: 30.0DEG  
Test Speed: HIGH  
Temperature:25.3DEG  
Operators:shan  
Test Date:2018-09-13

γ Range: 0 - 180DEG  
γ Interval: 2.0DEG  
Test System:EVERFINE GO-2000A\_V1 SYSTEM V1.0.257  
Humidity:45.0%  
Test Distance:6.950m [K=1.0000]  
Remarks:

WEC AND CCEC

NAME: C-SFR-F21S-HB-D24CC-RGBW(4000K)-56-5050-1M-B	WEIGHT:0.490KG/M
DIM.: 11.5*29mm	SPEC.:
MFR.:	SUR.:16*1000mm
	PROTECTION ANGLE:/

pcc	80%			70%			50%			30%			10%			0
ρw	50%	30%	10%	50%	30%	10%	50%	30%	10%	50%	30%	10%	50%	30%	10%	0
ρfc	20%			20%			20%			20%			20%			0
RCR	RCR:Room Cavity Ratio						Wall Exitance Coefficients(WEC)									
0.0																
1.0	.458	.261	.083	.445	.254	.081	.420	.241	.077	.396	.229	.073	.375	.217	.070	
2.0	.401	.220	.067	.388	.214	.066	.366	.203	.063	.345	.193	.060	.325	.184	.058	
3.0	.357	.190	.057	.346	.186	.056	.326	.177	.054	.307	.168	.052	.289	.160	.050	
4.0	.323	.168	.049	.313	.164	.048	.294	.156	.047	.277	.149	.045	.261	.142	.043	
5.0	.294	.150	.043	.285	.146	.043	.268	.140	.041	.252	.133	.040	.238	.127	.038	
6.0	.269	.135	.039	.261	.132	.038	.246	.126	.037	.232	.121	.035	.219	.115	.034	
7.0	.249	.123	.035	.241	.120	.034	.228	.115	.033	.215	.110	.032	.202	.105	.031	
8.0	.231	.113	.032	.224	.110	.031	.212	.106	.030	.200	.101	.029	.188	.097	.028	
9.0	.215	.104	.029	.209	.102	.029	.198	.098	.028	.187	.094	.027	.176	.090	.026	
10.0	.202	.097	.027	.196	.095	.026	.185	.091	.026	.175	.087	.025	.166	.083	.024	

pcc	80%			70%			50%			30%			10%			0
ρw	50%	30%	10%	50%	30%	10%	50%	30%	10%	50%	30%	10%	50%	30%	10%	0
ρfc	20%			20%			20%			20%			20%			0
RCR	RCR:Room Cavity Ratio						Ceiling Cavity Exitance Coefficients(CCEC)									
0.0	.350	.350	.350	.299	.299	.299	.204	.204	.204	.117	.117	.117	.038	.038	.038	
1.0	.344	.309	.276	.295	.265	.238	.202	.182	.165	.116	.105	.096	.037	.034	.031	
2.0	.336	.280	.234	.288	.241	.202	.197	.167	.141	.114	.097	.083	.036	.031	.027	
3.0	.327	.260	.207	.280	.224	.180	.192	.156	.126	.111	.091	.074	.036	.030	.024	
4.0	.317	.245	.190	.272	.211	.165	.187	.147	.116	.108	.086	.069	.035	.028	.023	
5.0	.308	.233	.177	.264	.201	.154	.182	.141	.109	.105	.083	.065	.034	.027	.021	
6.0	.299	.223	.169	.257	.193	.147	.177	.135	.104	.103	.079	.062	.033	.026	.020	
7.0	.290	.215	.162	.249	.186	.141	.172	.131	.100	.100	.077	.060	.032	.025	.020	
8.0	.282	.208	.157	.243	.180	.137	.168	.127	.097	.098	.075	.058	.032	.024	.019	
9.0	.274	.202	.153	.236	.175	.134	.164	.123	.095	.095	.073	.057	.031	.024	.019	
10.0	.267	.197	.150	.230	.171	.131	.160	.120	.093	.093	.071	.056	.030	.023	.018	

C Range: 0 - 360DEG  
C Interval: 30.0DEG  
Test Speed: HIGH  
Temperature:25.3DEG  
Operators:shan  
Test Date:2018-09-13

γ Range: 0 - 180DEG  
γ Interval: 2.0DEG  
Test System:EVERFINE GO-2000A\_V1 SYSTEM V1.0.257  
Humidity:45.0%  
Test Distance:6.950m [K=1.0000]  
Remarks:

Uncorrected UGR Table

NAME: C-SFR-F21S-HB-D24CC-RGBW(4000K)-56-5050-1M-B						WEIGHT:0.490KG/M				
DIM.: 11.5*29mm						SPEC.:		SERIAL No.:		
MFR.:						SUR.:16*1000mm		PROTECTION ANGLE:/		
ceiling/cavity	0.7	0.7	0.5	0.5	0.3	0.7	0.7	0.5	0.5	0.3
walls	0.5	0.3	0.5	0.3	0.3	0.5	0.3	0.5	0.3	0.3
working plane	0.2	0.2	0.2	0.2	0.2	0.2	0.2	0.2	0.2	0.2
Room dimensions						Viewed crosswise				
x = 2H y = 2H						Viewed endwise				
3H						10.8	12.2	11.2	12.6	13.1
4H						13.3	14.6	13.7	15.1	15.6
6H						14.6	15.9	15.1	16.4	16.9
8H						16.1	17.3	16.6	17.8	18.4
12H						17.0	18.1	17.5	18.6	19.2
12H						17.9	19.0	18.4	19.5	20.1
4H 2H						11.3	12.6	11.8	13.1	13.6
3H						14.1	15.2	14.6	15.7	16.3
4H						15.6	16.6	16.2	17.2	17.8
6H						17.3	18.3	17.9	18.8	19.5
8H						18.3	19.1	18.9	19.7	20.4
12H						19.4	20.2	20.0	20.8	21.4
8H 4H						16.0	16.8	16.6	17.4	18.1
6H						18.0	18.7	18.6	19.3	20.0
8H						19.1	19.8	19.8	20.4	21.1
12H						20.5	21.0	21.1	21.7	22.4
12H 4H						16.0	16.8	16.6	17.4	18.0
6H						18.1	18.7	18.7	19.4	20.1
8H						19.4	19.9	20.0	20.6	21.3
Variations with the observer position at spacings:										
S = 1.0H		+ 0.1 / - 0.2				+ 0.1 / - 0.1				
1.5H		+ 0.2 / - 0.3				+ 0.2 / - 0.3				
2.0H		+ 0.2 / - 0.4				+ 0.2 / - 0.3				

CIE Pub.117 Corrected 30.00 lm Total Lamp Luminous Flux.(8log(F/F0) = -12.2)

C Range: 0 - 360DEG  
C Interval: 30.0DEG  
Test Speed: HIGH  
Temperature:25.3DEG  
Operators:shan  
Test Date:2018-09-13

γ Range: 0 - 180DEG  
γ Interval: 2.0DEG  
Test System:EVERFINE GO-2000A\_V1 SYSTEM V1.0.257  
Humidity:45.0%  
Test Distance:6.950m [K=1.0000]  
Remarks:

UTILIZATION FACTORS TABLE

NAME: C-SFR-F21S-HB-D24CC-RGBW(4000K)-56-5050-1M-B	WEIGHT:0.490KG/M
DIM.: 11.5*29mm	SERIAL No.:
MFR.:	PROTECTION ANGLE:/

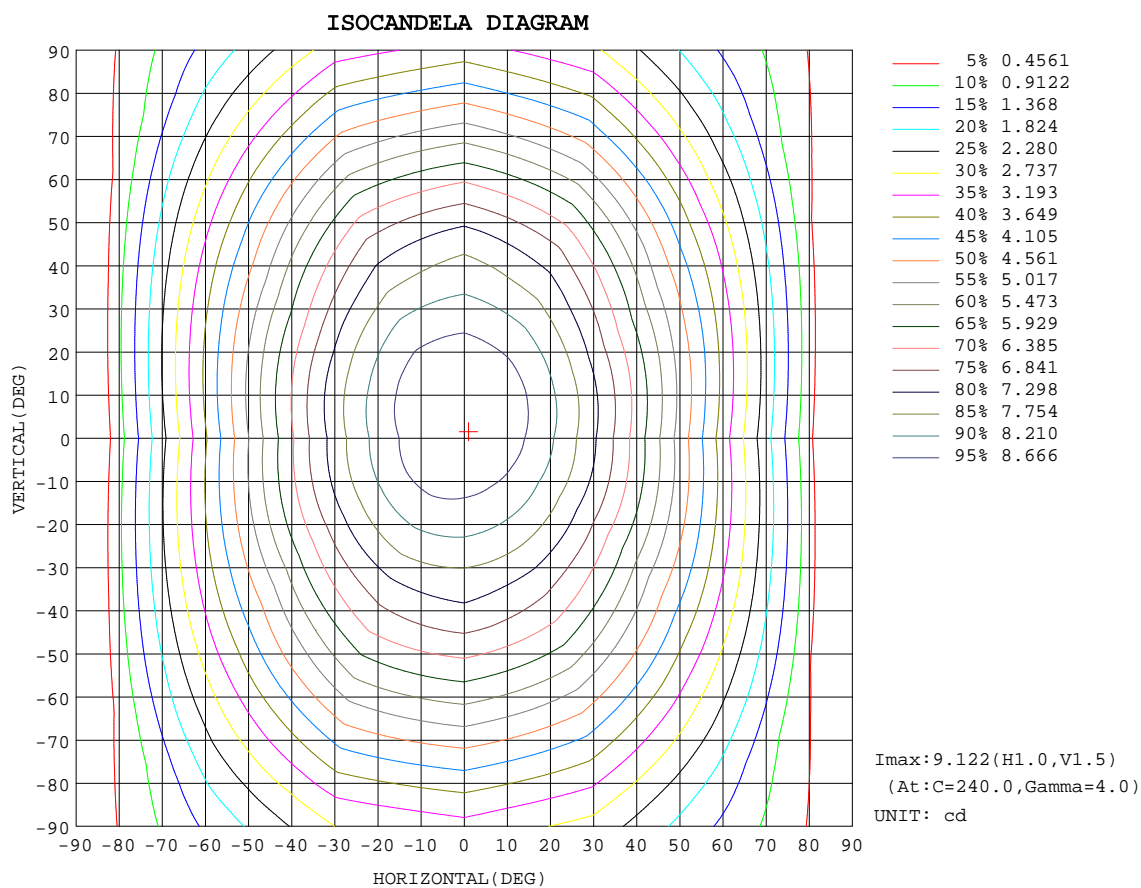
REFLECTANCE										
Ceiling	0.8	0.8	0.8	0.7	0.7	0.7	0.5	0.5	0.5	0
Walls	0.7	0.5	0.3	0.7	0.5	0.3	0.7	0.5	0.3	0
Working plane	0.2	0.2	0.2	0.2	0.2	0.2	0.2	0.2	0.2	0
ROOM INDEX	UTILIZATION FACTORS(PERCENT)    k(RI) x RCR = 5									
k = 0.60	61	46	37	59	45	37	57	44	36	28
0.80	72	56	47	70	56	46	67	54	45	36
1.00	81	66	56	79	65	55	76	66	54	44
1.25	90	75	65	87	73	64	83	71	62	51
1.50	96	82	71	93	80	70	88	77	68	57
2.00	105	92	82	101	89	80	95	85	78	65
2.50	110	98	89	106	96	87	100	91	83	70
3.00	114	104	95	111	101	93	103	95	89	74
4.00	120	111	103	116	108	101	108	101	96	80
5.00	124	116	109	119	112	106	111	105	100	84
ROOM INDEX	UF(total)									Direct
According to DIN EN 13032-2 2004										
Suspended										
SHRNOM = 1.25										

C Range: 0 - 360DEG  
C Interval: 30.0DEG  
Test Speed: HIGH  
Temperature:25.3DEG  
Operators:shan  
Test Date:2018-09-13

$\gamma$  Range: 0 - 180DEG  
 $\gamma$  Interval: 2.0DEG  
Test System:EVERFINE GO-2000A\_V1 SYSTEM V1.0.257  
Humidity:45.0%  
Test Distance:6.950m [K=1.0000]  
Remarks:

### ISOCANDELA DIAGRAM

NAME: C-SFR-F21S-HB-D24CC-RGBW(4000K)-56-5050-1M-B	WEIGHT:0.490KG/M
DIM.: 11.5*29mm	SERIAL No.:
MFR.:	PROTECTION ANGLE:/
SPEC.:	
SUR.:16*1000mm	

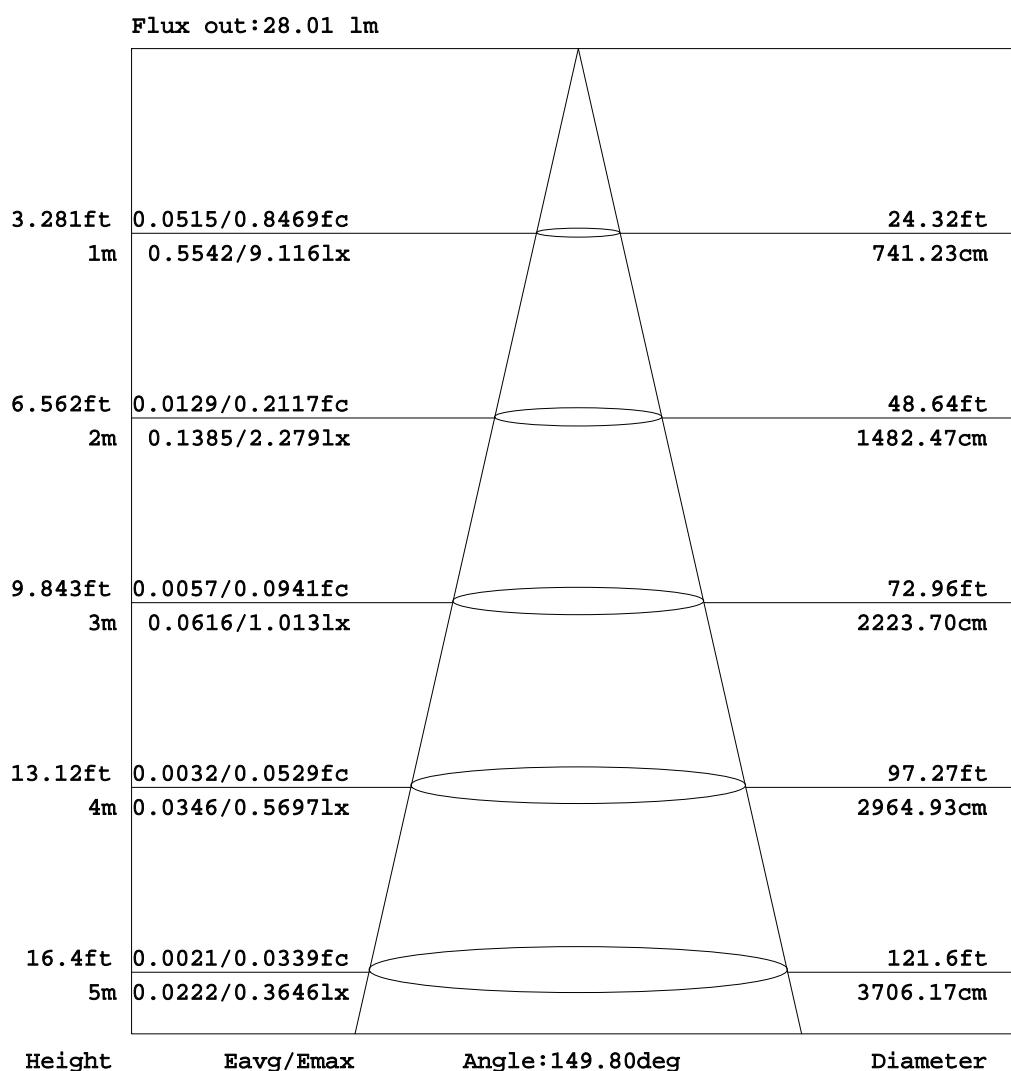


C Range: 0 - 360DEG  
C Interval: 30.0DEG  
Test Speed: HIGH  
Temperature:25.3DEG  
Operators:shan  
Test Date:2018-09-13

$\gamma$  Range: 0 - 180DEG  
 $\gamma$  Interval: 2.0DEG  
Test System:EVERFINE GO-2000A\_V1 SYSTEM V1.0.257  
Humidity:45.0%  
Test Distance:6.950m [K=1.0000]  
Remarks:

### AAI Figure

NAME: C-SFR-F21S-HB-D24CC-RGBW(4000K)-56-5050-1M-B	5050-1M-B	WEIGHT:0.490KG/M
DIM.: 11.5*29mm	SPEC.:	SERIAL No.:
MFR.:	SUR.:16*1000mm	PROTECTION ANGLE:/



Note:The Curves indicate the illuminated area and the average illumination when the luminaire is at different distance.

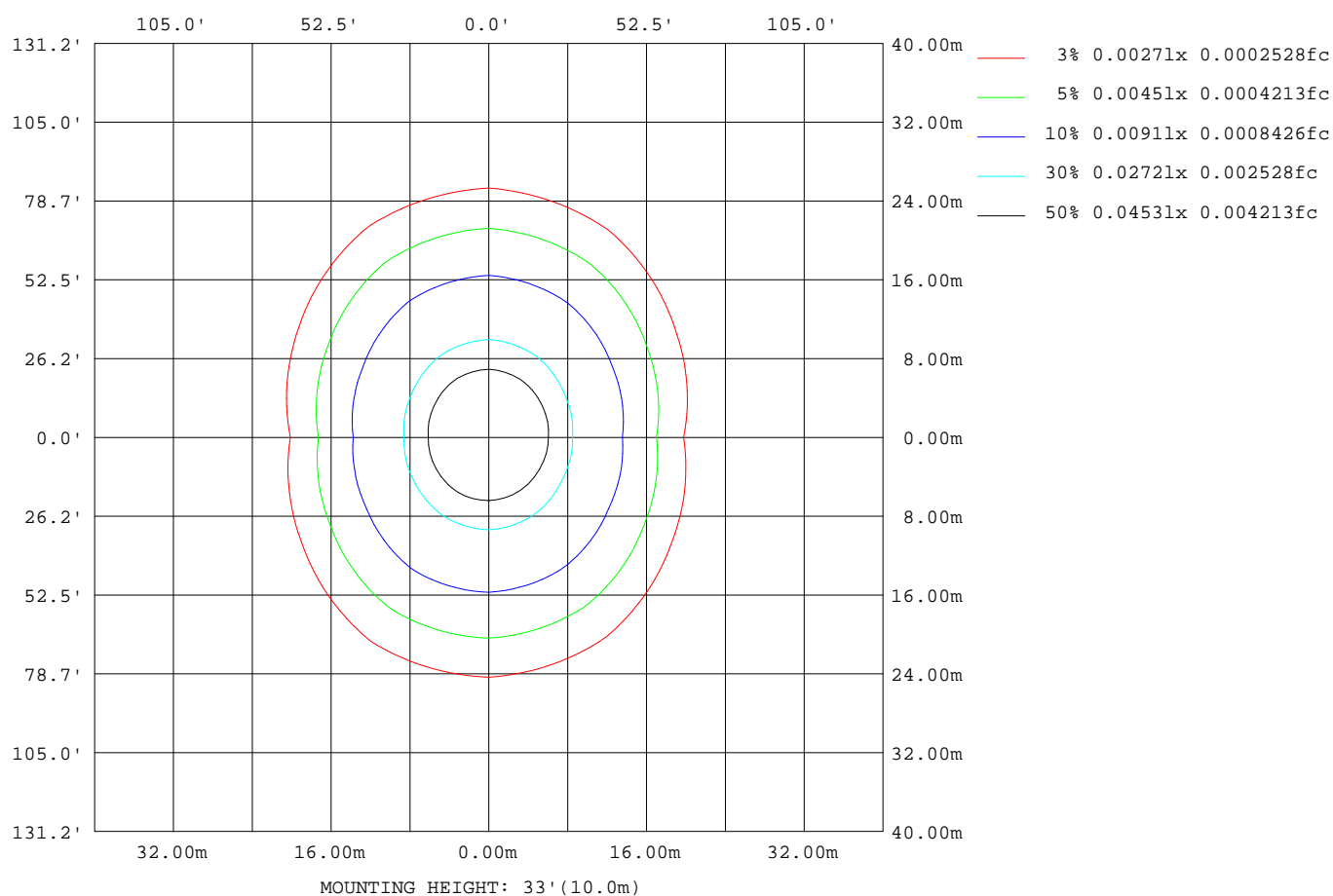
C Range: 0 - 360DEG  
C Interval: 30.0DEG  
Test Speed: HIGH  
Temperature:25.3DEG  
Operators:shan  
Test Date:2018-09-13

γ Range: 0 - 180DEG  
γ Interval: 2.0DEG  
Test System:EVERFINE GO-2000A\_V1 SYSTEM V1.0.257  
Humidity:45.0%  
Test Distance:6.950m [K=1.0000]  
Remarks:



### ISOLUX DIAGRAM

NAME: C-SFR-F21S-HB-D24CC-RGBW(4000K)-56-5050-1M-B	WEIGHT:0.490KG/M
DIM.: 11.5*29mm	SERIAL No.:
MFR.:	PROTECTION ANGLE:/
SPEC.:	SUR.:16*1000mm



C Range: 0 - 360DEG  
C Interval: 30.0DEG  
Test Speed: HIGH  
Temperature:25.3DEG  
Operators:shan  
Test Date:2018-09-13

$\gamma$  Range: 0 - 180DEG  
 $\gamma$  Interval: 2.0DEG  
Test System:EVERFINE GO-2000A\_V1 SYSTEM V1.0.257  
Humidity:45.0%  
Test Distance:6.950m [K=1.0000]  
Remarks:

**Average Luminance Table(CIBSE)**

NAME: C-SFR-F21S-HB-D24CC-RGBW(4000K)-56-5050-1M-B	WEIGHT:0.490KG/M
DIM.: 11.5*29mm	SERIAL No.:
MFR.:	PROTECTION ANGLE:/

Parameter description for average Luminance	Symbol	Value	Unit
Luminance in Azimuth Plane	Bc	refer Table 2	cd/sq.m.
Intensity at angle Gamma in given azimuth plane	I	from data	cd/klm
Number of lamps	N	1	
Output of each lamp(initial lumens as specified)	F	30	lm
Multiplying factor	K	1	
Luminous area in horizontal plane used in calculations	A	0.016	sq.m.
Angle to the downward vertical from light centre	Gamma	from data	deg

Table 1. Calculation parameters for determination of CIBSE LG3:1996 Average Luminance

G	C plane(deg)																		
deg	0	10	20	30	40	50	60	70	80	90	100	110	120	130	140	150	160	170	180
55	451	464	483	508	544	582	617	639	653	661	661	653	637	603	565	528	498	478	470
60	427	451	481	516	562	608	650	677	695	704	705	695	675	634	587	539	496	464	450
65	399	438	481	529	589	648	701	735	757	768	768	756	730	680	622	561	499	451	426
70	362	423	486	554	634	712	780	825	854	867	867	851	817	753	677	596	506	434	395
75	308	407	507	609	721	828	920	980	1019	1037	1038	1016	970	881	775	660	524	412	349
80	202	386	564	735	912	1074	1212	1302	1360	1385	1385	1350	1279	1150	992	814	582	385	268
85	0	409	796	1160	1520	1844	2114	2294	2408	2458	2454	2381	2236	1983	1667	1301	781	330	56

Table 2. Average Luminance(cd/sq.m.) for defined C plane,Gamma angle

CIBSE Category	Gamma (deg)	Average Luminance		Patch Luminance	
		maximum calculated	specified maximum	maximum measured	specified maximum
Category 1	55 to 90	2458	200	---	500
Category 2	65 to 90	2458	200	---	500
Category 3	75 to 90	2458	200	---	500

Table 3. Tabulation of Average and Patch Luminance(cd/sq.m.) for defined CIBSE categories

No match

C Range: 0 - 360DEG  
C Interval: 30.0DEG  
Test Speed: HIGH  
Temperature:25.3DEG  
Operators:shan  
Test Date:2018-09-13

γ Range: 0 - 180DEG  
γ Interval: 2.0DEG  
Test System:EVERFINE GO-2000A\_V1 SYSTEM V1.0.257  
Humidity:45.0%  
Test Distance:6.950m [K=1.0000]  
Remarks:

LUMINOUS DISTRIBUTION INTENSITY DATA

NAME: C-SFR-F21S-HB-D24CC-RGBW(4000K)-56-5050-1M-B	WEIGHT:0.490KG/M
DIM.: 11.5*29mm	SPEC.: SERIAL No.:
MFR.:	SUR.:16*1000mm PROTECTION ANGLE:/

Table--1

UNIT: cd

C(DEC)	0	30	60	90	120	150	180	210	240	270	300	330						
γ (DEC)	0	9.09	9.09	9.09	9.09	9.09	9.09	9.09	9.09	9.09	9.09	9.09						
5	9.05	9.02	9.00	9.02	9.04	9.06	9.07	9.10	9.13	9.12	9.09	9.07						
10	8.89	8.81	8.80	8.83	8.86	8.90	8.93	9.01	9.11	9.09	9.03	8.95						
15	8.69	8.61	8.62	8.67	8.70	8.72	8.75	8.88	9.02	9.04	8.93	8.79						
20	8.28	8.21	8.30	8.39	8.40	8.37	8.38	8.59	8.83	8.86	8.70	8.46						
25	7.95	7.91	8.03	8.16	8.16	8.07	8.07	8.31	8.63	8.70	8.49	8.18						
30	7.37	7.36	7.62	7.77	7.75	7.55	7.50	7.84	8.29	8.41	8.12	7.66						
35	6.92	6.96	7.31	7.53	7.45	7.16	7.07	7.48	8.03	8.19	7.87	7.27						
40	6.19	6.32	6.87	7.20	7.00	6.54	6.33	6.86	7.59	7.91	7.47	6.63						
45	5.67	5.89	6.59	6.96	6.73	6.11	5.82	6.41	7.32	7.68	7.16	6.19						
50	4.83	5.20	6.10	6.48	6.28	5.41	5.02	5.73	6.88	7.24	6.68	5.50						
55	4.29	4.77	5.75	6.15	5.93	4.95	4.46	5.26	6.52	6.89	6.30	5.05						
60	3.41	4.12	5.20	5.63	5.40	4.31	3.60	4.59	5.93	6.34	5.71	4.39						
65	2.84	3.69	4.83	5.29	5.03	3.90	3.03	4.15	5.52	5.93	5.30	3.93						
70	1.98	3.03	4.27	4.75	4.47	3.26	2.16	3.47	4.90	5.33	4.67	3.22						
75	1.41	2.62	3.90	4.39	4.10	2.83	1.59	3.01	4.50	4.93	4.26	2.75						
80	0.56	2.04	3.37	3.85	3.55	2.26	0.75	2.37	3.91	4.33	3.70	2.13						
85	0.03	1.70	3.03	3.51	3.20	1.90	0.19	1.99	3.52	3.96	3.33	1.77						
90	0.00	1.28	2.58	3.04	2.73	1.43	0.00	1.49	2.98	3.41	2.82	1.30						
95	0.00	1.07	2.32	2.78	2.33	1.20	0.00	1.22	2.67	3.08	2.51	1.08						
100	0.00	0.82	1.96	2.37	1.85	0.79	0.00	0.76	2.00	2.45	2.12	0.83						
105	0.00	0.69	1.76	2.14	1.57	0.61	0.00	0.71	1.55	2.22	1.90	0.72						
110	0.00	0.54	1.48	1.82	1.19	0.53	0.00	0.58	1.19	1.96	1.59	0.59						
115	0.00	0.48	1.31	1.63	1.05	0.38	0.00	0.42	1.03	1.77	1.43	0.52						
120	0.00	0.36	1.09	1.37	0.88	0.22	0.00	0.21	0.95	1.51	1.20	0.42						
125	0.00	0.30	0.95	1.20	0.62	0.12	0.00	0.13	0.78	1.34	1.06	0.38						
130	0.00	0.18	0.76	0.98	0.46	0.01	0.00	0.04	0.50	1.11	0.89	0.31						
135	0.00	0.12	0.64	0.84	0.33	0.00	0.00	0.00	0.36	0.95	0.77	0.24						
140	0.00	0.04	0.48	0.66	0.15	0.00	0.00	0.00	0.17	0.67	0.62	0.15						
145	0.00	0.00	0.37	0.52	0.06	0.00	0.00	0.00	0.07	0.46	0.53	0.10						
150	0.00	0.00	0.20	0.34	0.00	0.00	0.00	0.00	0.00	0.29	0.34	0.01						
155	0.00	0.00	0.10	0.20	0.00	0.00	0.00	0.00	0.00	0.09	0.23	0.00						
160	0.00	0.00	0.00	0.04	0.00	0.00	0.00	0.00	0.00	0.00	0.10	0.00						
165	0.00	0.00	0.00	0.00	0.00	0.00	0.00	0.00	0.00	0.00	0.01	0.00						
170	0.00	0.00	0.00	0.00	0.00	0.00	0.00	0.00	0.00	0.00	0.00	0.00						
175	0.00	0.00	0.00	0.00	0.00	0.00	0.00	0.00	0.00	0.00	0.00	0.00						
180	0.00	0.00	0.00	0.00	0.00	0.00	0.00	0.00	0.00	0.00	0.00	0.00						

C Range: 0 - 360DEG  
C Interval: 30.0DEG  
Test Speed: HIGH  
Temperature:25.3DEG  
Operators:shan  
Test Date:2018-09-13

γ Range: 0 - 180DEG  
γ Interval: 2.0DEG  
Test System:EVERFINE GO-2000A\_V1 SYSTEM V1.0.257  
Humidity:45.0%  
Test Distance:6.950m [K=1.0000]  
Remarks: