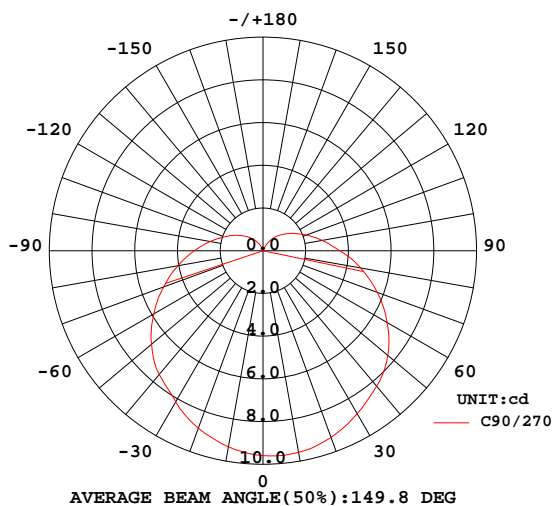


LUMINAIRE PHOTOMETRIC TEST REPORT

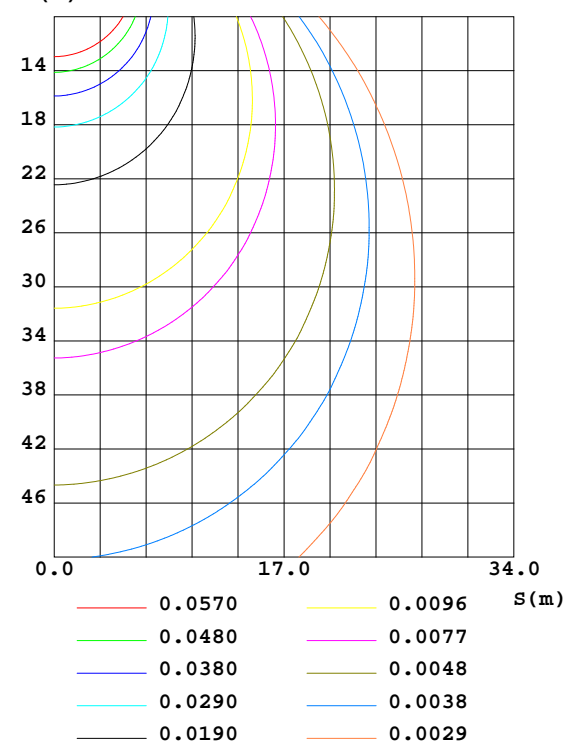
NAME: C-SFR-F21S-HB-D24CC-RGB-56-5050-1M-B	WEIGHT:0.490KG/M
DIM.: 11.5*29mm	SPEC.:
MFR.:	SUR.:16*1000mm
	PROTECTION ANGLE:/

DATA OF LAMP		PHOTOMETRIC DATA				Eff: 8.22 lm/W
MODEL	5050	Imax(cd)	9.626	S/MH(C0/180)	1.21	
NOMINAL POWER(W)	4.66	LOR(%)	127.7	S/MH(C90/270)	1.27	
RATED VOLTAGE(V)	24	TOTAL FLUX(lm)	38.298	η UP,DN(C0-180)	7.8,53.6	
NOMINAL FLUX(lm)	30	CIE CLASS	SEMI-D.	η UP,DN(C180-360)	8.7,57.5	
LAMPS INSIDE	1	η up(%)	16.5	CIBSE SHR NOM	1.50	
TEST VOLTAGE(V)	24	η down(%)	111.1	CIBSE SHR MAX	1.50	

LUMINOUS INTENSITY DISTRIBUTION DIAGRAM



C0 PLANE ISOLUX DIAGRAM (UNIT:lx)



C Range: 0 - 360DEG
C Interval: 30.0DEG
Test Speed: HIGH
Temperature:25.3DEG
Operators:shan
Test Date:2018-09-12

γ Range: 0 - 180DEG
γ Interval: 2.0DEG
Test System:EVERFINE GO-2000A_V1 SYSTEM V1.0.257
Humidity:45.0%
Test Distance:6.950m [K=1.0000]
Remarks:

ZONAL FLUX DIAGRAM

ZONAL FLUX DIAGRAM:

γ	C0	C45	C90	C135	C180	C225	C270	C315	γ	Φ zone	Φ total	Φ lum, lamp
10	9.355	9.296	9.321	9.364	9.404	9.536	9.589	9.472	0- 10	0.9072	0.9072	2.37,3.02
20	8.729	8.708	8.845	8.819	8.827	9.138	9.305	9.023	10- 20	2.599	3.506	9.15,11.7
30	7.739	7.896	8.174	8.047	7.895	8.449	8.813	8.280	20- 30	3.954	7.460	19.5,24.9
40	6.490	6.927	7.560	7.084	6.666	7.554	8.275	7.354	30- 40	4.828	12.29	32.1,41
50	5.057	5.905	6.813	6.106	5.263	6.583	7.632	6.381	40- 50	5.214	17.50	45.7,58.3
60	3.540	4.871	5.903	5.070	3.763	5.508	6.710	5.301	50- 60	5.083	22.58	59,75.3
70	2.003	3.809	4.952	4.024	2.246	4.398	5.688	4.179	60- 70	4.511	27.10	70.7,90.3
80	0.4695	2.843	4.055	3.040	0.7252	3.304	4.641	3.087	70- 80	3.610	30.71	80.2,102
90	0	2.044	3.208	2.197	0	2.356	3.602	2.186	80- 90	2.628	33.33	87,111
100	0	1.470	2.511	1.346	0	1.449	2.813	1.560	90-100	1.882	35.22	92,117
110	0	1.069	1.923	0.8885	0	1.010	2.154	1.142	100-110	1.279	36.49	95.3,122
120	0	0.7620	1.456	0.5432	0	0.5782	1.636	0.8466	110-120	0.8563	37.35	97.5,125
130	0	0.4990	1.055	0.2374	0	0.2629	1.198	0.6219	120-130	0.5227	37.87	98.9,126
140	0	0.2777	0.7090	0.0605	0	0.0791	0.7974	0.3973	130-140	0.2786	38.15	99.6,127
150	0	0.1066	0.3752	0	0	0	0.3633	0.1975	140-150	0.1149	38.27	99.9,128
160	0	0.0000	0.0249	0	0	0	0.0461	0.0727	150-160	0.0295	38.30	100,128
170	0	0	0	0	0	0	0	0	160-170	0.0014	38.30	100,128
180	0	0	0	0	0	0	0	0	170-180	0	38.30	100,128
DEG	LUMINOUS INTENSITY:cd									UNIT:lm		

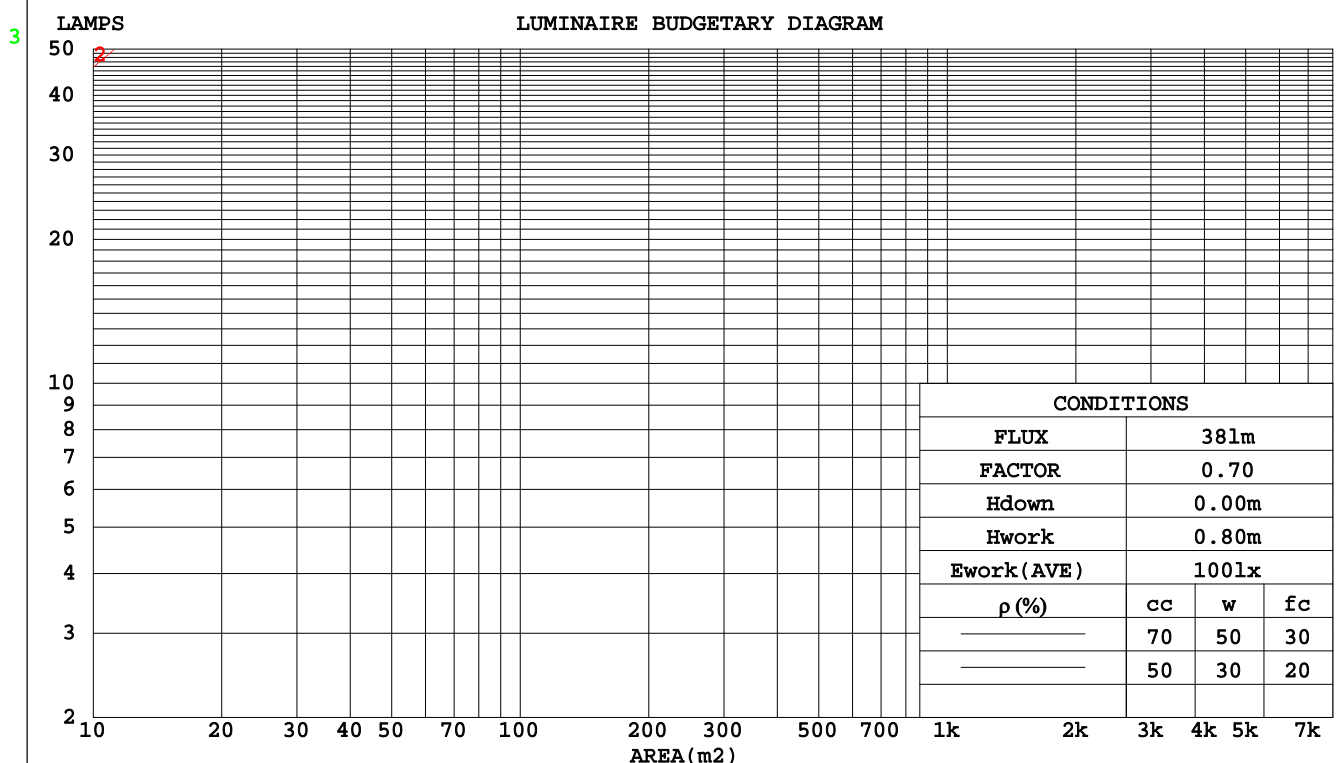
C Range: 0 - 360DEG
C Interval: 30.0DEG
Test Speed: HIGH
Temperature:25.3DEG
Operators:shan
Test Date:2018-09-12

γ Range: 0 - 180DEG
 γ Interval: 2.0DEG
Test System:EVERFINE GO-2000A_V1 SYSTEM V1.0.257
Humidity:45.0%
Test Distance:6.950m [K=1.0000]
Remarks:

CU AND LUMINAIRE BUDGETARY ESTIMATE DIAGRAM

NAME: C-SFR-F21S-HB-D24CC-RGB-56-5050-1M-BTYPE:/	WEIGHT:0.490KG/M
DIM.: 11.5*29mm	SPEC.:
MFR.:	SUR.:16*1000mm
	PROTECTION ANGLE:/

pcc	80%			70%			50%			30%			10%			0
pw	50%	30%	10%	50%	30%	10%	50%	30%	10%	50%	30%	10%	50%	30%	10%	0
pfc	20%			20%			20%			20%			20%			0
RCR	Coefficients of Utilization(CU)															
0.0	1.48	1.48	1.48	1.43	1.43	1.43	1.33	1.33	1.33	1.23	1.23	1.23	1.15	1.15	1.15	1.11
1.0	1.24	1.17	1.11	1.20	1.13	1.08	1.11	1.06	1.02	1.03	.99	.95	.96	.93	.90	.86
2.0	1.06	.97	.88	1.03	.93	.86	.95	.88	.81	.88	.82	.77	.82	.77	.73	.69
3.0	.92	.81	.72	.89	.79	.70	.83	.74	.67	.77	.70	.64	.72	.66	.60	.57
4.0	.81	.69	.60	.78	.67	.59	.73	.64	.56	.68	.60	.54	.63	.57	.51	.48
5.0	.72	.60	.51	.70	.59	.50	.65	.55	.48	.61	.53	.46	.57	.50	.44	.41
6.0	.65	.53	.44	.63	.52	.43	.59	.49	.42	.55	.46	.40	.51	.44	.38	.35
7.0	.59	.47	.39	.57	.46	.38	.53	.44	.37	.50	.42	.35	.47	.40	.34	.31
8.0	.53	.42	.34	.52	.41	.34	.49	.39	.33	.46	.37	.31	.43	.36	.30	.28
9.0	.49	.38	.31	.47	.37	.30	.45	.36	.29	.42	.34	.28	.40	.32	.27	.25
10.0	.45	.35	.28	.44	.34	.27	.41	.32	.26	.39	.31	.26	.37	.30	.25	.22



C Range: 0 - 360DEG
C Interval: 30.0DEG
Test Speed: HIGH
Temperature:25.3DEG
Operators:shan
Test Date:2018-09-12

γ Range: 0 - 180DEG
γ Interval: 2.0DEG
Test System:EVERFINE GO-2000A_V1 SYSTEM V1.0.257
Humidity:45.0%
Test Distance:6.950m [K=1.0000]
Remarks:

WEC AND CCEC

NAME: C-SFR-F21S-HB-D24CC-RGB-56-5050-1M-BTYPE: /	WEIGHT: 0.490KG/M
DIM.: 11.5*29mm	SPEC.: SERIAL No.:
MFR.:	SUR.: 16*1000mm PROTECTION ANGLE: /

pcc	80%			70%			50%			30%			10%			0	
pw	50%	30%	10%	50%	30%	10%	50%	30%	10%	50%	30%	10%	50%	30%	10%	0	
pfc	20%			20%			20%			20%			20%			0	
RCR	RCR:Room Cavity Ratio						Wall Exitance Coefficients(WEC)										
0.0																	
1.0	.482	.274	.087	.467	.267	.085	.441	.253	.081	.416	.240	.077	.394	.228	.074		
2.0	.421	.231	.071	.408	.225	.069	.384	.213	.066	.362	.203	.064	.341	.193	.061		
3.0	.375	.200	.060	.364	.195	.059	.342	.185	.056	.322	.177	.054	.304	.168	.052		
4.0	.339	.176	.052	.328	.172	.051	.309	.164	.049	.291	.156	.047	.274	.149	.045		
5.0	.309	.157	.046	.299	.154	.045	.282	.147	.043	.265	.140	.042	.250	.133	.040		
6.0	.283	.142	.041	.275	.139	.040	.259	.133	.039	.244	.127	.037	.229	.121	.036		
7.0	.261	.129	.037	.254	.126	.036	.239	.121	.035	.225	.115	.034	.212	.110	.032		
8.0	.243	.119	.033	.236	.116	.033	.222	.111	.032	.210	.106	.031	.198	.102	.030		
9.0	.226	.109	.031	.220	.107	.030	.207	.103	.029	.196	.098	.028	.185	.094	.027		
10.0	.212	.102	.028	.206	.099	.028	.195	.095	.027	.184	.091	.026	.174	.087	.025		

pcc	80%			70%			50%			30%			10%			0
ρw	50%	30%	10%	50%	30%	10%	50%	30%	10%	50%	30%	10%	50%	30%	10%	0
ρfc	20%			20%			20%			20%			20%			0
RCR	RCR:Room Cavity Ratio						Ceiling Cavity Exitance Coefficients(CCEC)									
0.0	.369	.369	.369	.316	.316	.316	.215	.215	.215	.124	.124	.124	.040	.040	.040	
1.0	.363	.326	.292	.311	.280	.251	.213	.192	.174	.122	.111	.101	.039	.036	.033	
2.0	.354	.296	.247	.303	.255	.214	.208	.176	.149	.120	.103	.087	.038	.033	.028	
3.0	.345	.275	.219	.295	.237	.190	.203	.165	.133	.117	.096	.079	.038	.031	.026	
4.0	.335	.259	.201	.287	.223	.174	.197	.156	.123	.114	.091	.073	.037	.030	.024	
5.0	.325	.246	.188	.279	.213	.163	.192	.149	.115	.111	.087	.068	.036	.028	.023	
6.0	.315	.236	.179	.271	.204	.155	.187	.143	.110	.108	.084	.065	.035	.027	.022	
7.0	.306	.227	.172	.263	.197	.150	.182	.138	.106	.106	.081	.063	.034	.027	.021	
8.0	.298	.220	.167	.256	.191	.145	.177	.134	.103	.103	.079	.061	.033	.026	.020	
9.0	.290	.214	.163	.249	.186	.142	.173	.130	.101	.101	.077	.060	.033	.025	.020	
10.0	.282	.208	.159	.243	.181	.139	.169	.127	.099	.098	.075	.059	.032	.025	.020	

C Range: 0 - 360DEG
C Interval: 30.0DEG
Test Speed: HIGH
Temperature: 25.3DEG
Operators: shan
Test Date: 2018-09-12

γ Range: 0 - 180DEG
γ Interval: 2.0DEG
Test System: EVERFINE GO-2000A_V1 SYSTEM V1.0.257
Humidity: 45.0%
Test Distance: 6.950m [K=1.0000]
Remarks:

Uncorrected UGR Table

NAME: C-SFR-F21S-HB-D24CC-RGB-56-5050-1M-BTYPE:/						WEIGHT:0.490KG/M				
DIM.: 11.5*29mm						SPEC.:		SERIAL No.:		
MFR.:						SUR.:16*1000mm		PROTECTION ANGLE:/		
ceiling/cavity	0.7	0.7	0.5	0.5	0.3	0.7	0.7	0.5	0.5	0.3
walls	0.5	0.3	0.5	0.3	0.3	0.5	0.3	0.5	0.3	0.3
working plane	0.2	0.2	0.2	0.2	0.2	0.2	0.2	0.2	0.2	0.2
Room dimensions						Viewed crosswise				
x = 2H y = 2H						Viewed endwise				
3H						10.9	12.4	11.4	12.8	13.3
4H						13.4	14.7	13.9	15.2	15.7
6H						14.8	16.1	15.3	16.5	17.1
8H						16.3	17.5	16.8	18.0	18.5
12H						17.1	18.3	17.7	18.8	19.4
12H						18.1	19.2	18.6	19.7	20.3
4H 2H						11.5	12.7	12.0	13.2	13.7
3H						14.2	15.3	14.8	15.8	16.4
4H						15.8	16.8	16.4	17.3	18.0
6H						17.5	18.4	18.1	19.0	19.6
8H						18.5	19.3	19.1	19.9	20.6
12H						19.6	20.4	20.2	21.0	21.6
8H 4H						16.1	17.0	16.7	17.6	18.2
6H						18.1	18.9	18.8	19.5	20.2
8H						19.3	20.0	20.0	20.6	21.3
12H						20.7	21.2	21.3	21.9	22.6
12H 4H						16.1	16.9	16.7	17.5	18.2
6H						18.3	18.9	18.9	19.5	20.3
8H						19.5	20.1	20.2	20.8	21.5
Variations with the observer position at spacings:										
S = 1.0H		+ 0.1 / - 0.2				+ 0.1 / - 0.1				
1.5H		+ 0.2 / - 0.3				+ 0.2 / - 0.3				
2.0H		+ 0.2 / - 0.4				+ 0.2 / - 0.3				

CIE Pub.117 Corrected 30.00 lm Total Lamp Luminous Flux.(8log(F/F0) = -12.2)

C Range: 0 - 360DEG
C Interval: 30.0DEG
Test Speed: HIGH
Temperature:25.3DEG
Operators:shan
Test Date:2018-09-12

γ Range: 0 - 180DEG
γ Interval: 2.0DEG
Test System:EVERFINE GO-2000A_V1 SYSTEM V1.0.257
Humidity:45.0%
Test Distance:6.950m [K=1.0000]
Remarks:

UTILIZATION FACTORS TABLE

NAME: C-SFR-F21S-HB-D24CC-RGB-56-5050-1M-BTYPE: /	WEIGHT: 0.490KG/M
DIM.: 11.5*29mm	SPEC.: SERIAL No.:
MFR.:	SUR.: 16*1000mm PROTECTION ANGLE: /

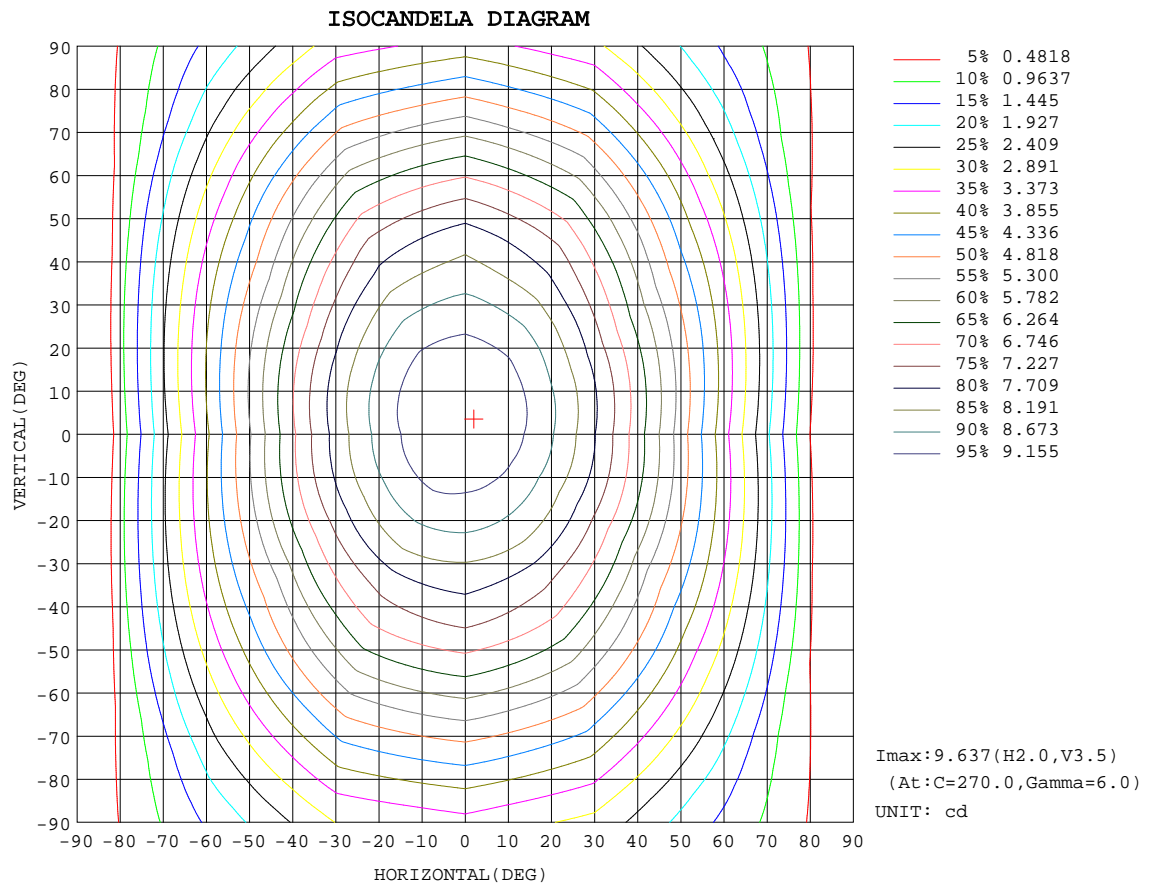
REFLECTANCE										
Ceiling	0.8	0.8	0.8	0.7	0.7	0.7	0.5	0.5	0.5	0
Walls	0.7	0.5	0.3	0.7	0.5	0.3	0.7	0.5	0.3	0
Working plane	0.2	0.2	0.2	0.2	0.2	0.2	0.2	0.2	0.2	0
ROOM INDEX	UTILIZATION FACTORS(PERCENT) k(RI) x RCR = 5									
k = 0.60	64	48	39	62	47	38	60	47	38	30
0.80	76	59	49	74	58	49	71	57	48	38
1.00	86	69	59	83	68	58	79	69	57	46
1.25	94	79	68	92	77	67	87	74	65	54
1.50	101	86	75	98	84	74	92	81	72	59
2.00	110	96	86	107	94	85	100	90	82	68
2.50	116	103	93	112	100	91	105	95	88	73
3.00	120	109	100	116	106	98	109	100	93	78
4.00	126	116	108	122	113	106	114	107	100	84
5.00	130	121	114	125	118	111	117	111	105	88
ROOM INDEX	UF(total)									Direct
According to DIN EN 13032-2 2004										
Suspended										
SHRNOM = 1.25										

C Range: 0 - 360DEG
C Interval: 30.0DEG
Test Speed: HIGH
Temperature: 25.3DEG
Operators: shan
Test Date: 2018-09-12

γ Range: 0 - 180DEG
 γ Interval: 2.0DEG
Test System: EVERFINE GO-2000A_V1 SYSTEM V1.0.257
Humidity: 45.0%
Test Distance: 6.950m [K=1.0000]
Remarks:

ISOCANDELA DIAGRAM

NAME: C-SFR-F21S-HB-D24CC-RGB-56-5050-1M-BTYPE: /	WEIGHT: 0.490KG/M
DIM.: 11.5*29mm	SPEC.: SERIAL No.:
MFR.:	SUR.: 16*1000mm PROTECTION ANGLE: /

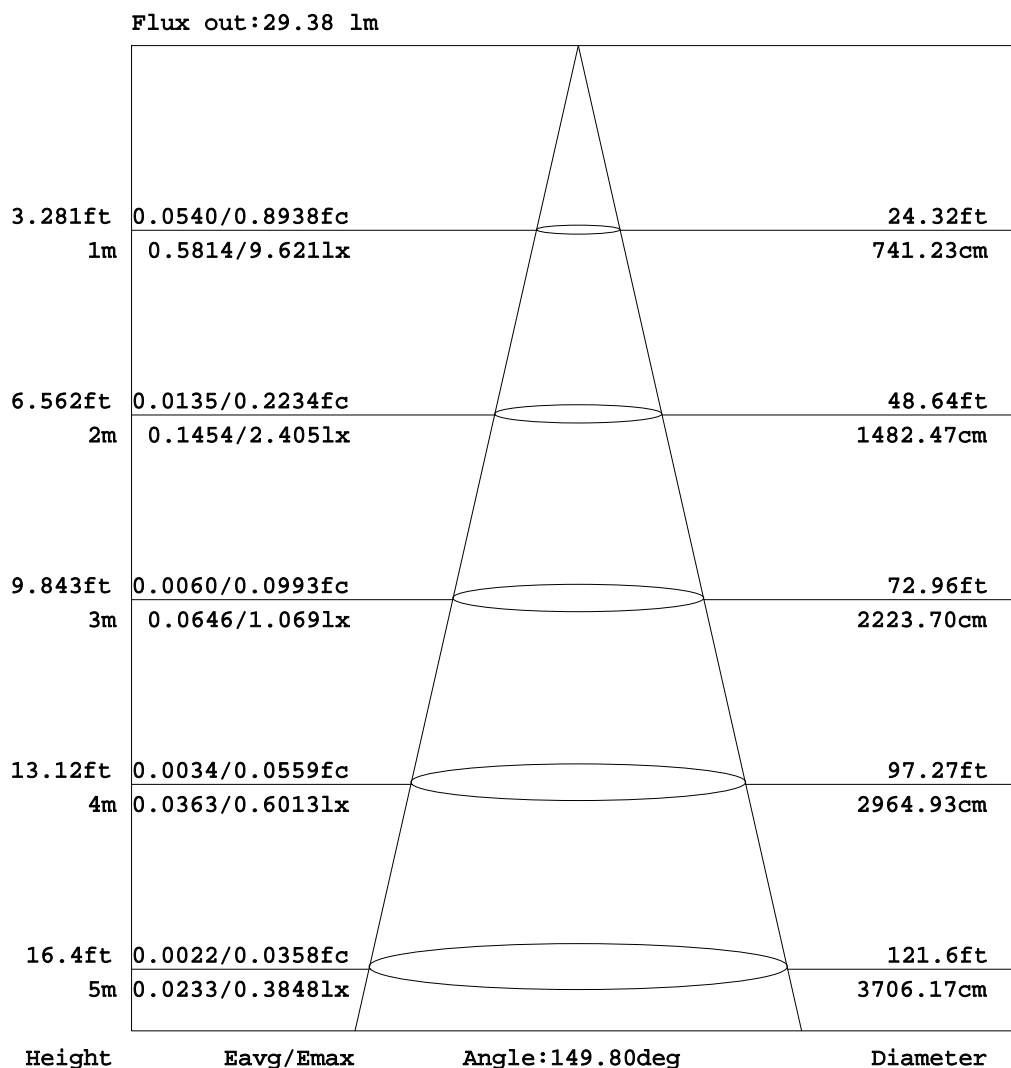


C Range: 0 - 360DEG
C Interval: 30.0DEG
Test Speed: HIGH
Temperature: 25.3DEG
Operators: shan
Test Date: 2018-09-12

γ Range: 0 - 180DEG
 γ Interval: 2.0DEG
Test System: EVERFINE GO-2000A_V1 SYSTEM V1.0.257
Humidity: 45.0%
Test Distance: 6.950m [K=1.0000]
Remarks:

AAI Figure

NAME: C-SFR-F21S-HB-D24CC-RGB-56-5050-1M-BTYPE:/	WEIGHT:0.490KG/M
DIM.: 11.5*29mm	SPEC.: SERIAL No.:
MFR.:	SUR.:16*1000mm PROTECTION ANGLE:/



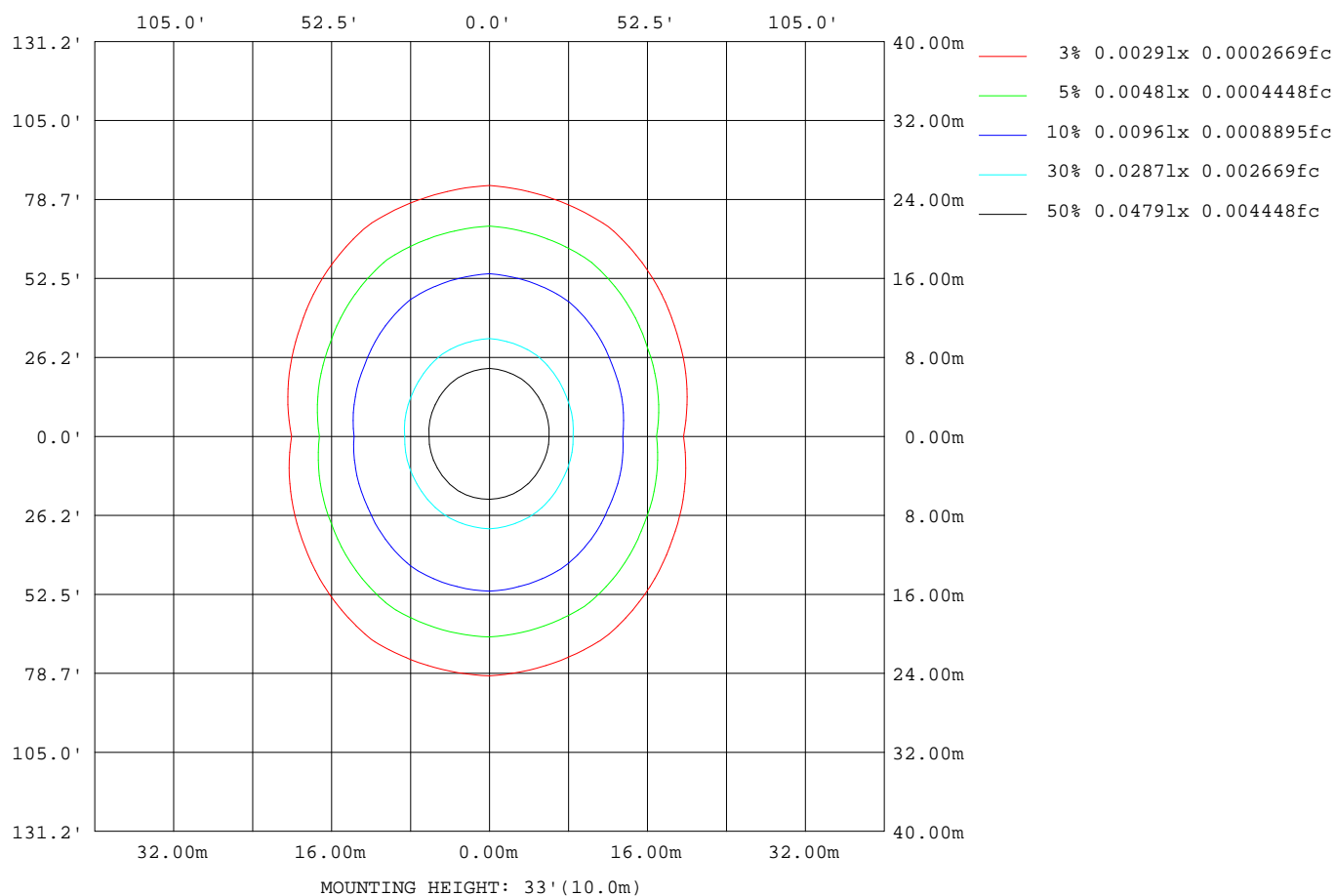
Note:The Curves indicate the illuminated area and the average illumination when the luminaire is at different distance.

C Range: 0 - 360DEG
C Interval: 30.0DEG
Test Speed: HIGH
Temperature:25.3DEG
Operators:shan
Test Date:2018-09-12

γ Range: 0 - 180DEG
 γ Interval: 2.0DEG
Test System:EVERFINE GO-2000A_V1 SYSTEM V1.0.257
Humidity:45.0%
Test Distance:6.950m [K=1.0000]
Remarks:

ISOLUX DIAGRAM

NAME: C-SFR-F21S-HB-D24CC-RGB-56-5050-1M-BTYPE: /	WEIGHT: 0.490KG/M
DIM.: 11.5*29mm	SPEC.: SERIAL No.:
MFR.:	SUR.: 16*1000mm PROTECTION ANGLE: /



C Range: 0 - 360DEG
C Interval: 30.0DEG
Test Speed: HIGH
Temperature: 25.3DEG
Operators: shan
Test Date: 2018-09-12

γ Range: 0 - 180DEG
 γ Interval: 2.0DEG
Test System: EVERFINE GO-2000A_V1 SYSTEM V1.0.257
Humidity: 45.0%
Test Distance: 6.950m [K=1.0000]
Remarks:

Average Luminance Table(CIBSE)

NAME: C-SFR-F21S-HB-D24CC-RGB-56-5050-1M-BTYPE:/	WEIGHT:0.490KG/M
DIM.: 11.5*29mm	SPEC.:
MFR.:	SUR.:16*1000mm
	PROTECTION ANGLE:/

Parameter description for average Luminance	Symbol	Value	Unit
Luminance in Azimuth Plane	Bc	refer Table 2	cd/sq.m.
Intensity at angle Gamma in given azimuth plane	I	from data	cd/klm
Number of lamps	N	1	
Output of each lamp(initial lumens as specified)	F	30	lm
Multiplying factor	K	1	
Luminous area in horizontal plane used in calculations	A	0.016	sq.m.
Angle to the downward vertical from light centre	Gamma	from data	deg

Table 1. Calculation parameters for determination of CIBSE LG3:1996 Average Luminance

G	C plane(deg)																		
deg	0	10	20	30	40	50	60	70	80	90	100	110	120	130	140	150	160	170	180
55	469	481	500	527	567	609	648	672	688	695	695	685	666	629	588	549	519	500	494
60	443	468	499	536	586	636	682	711	729	738	737	726	704	661	613	564	519	486	470
65	409	451	498	550	615	678	735	771	794	804	804	790	762	710	649	586	521	470	445
70	366	432	501	575	661	744	818	863	892	905	904	886	850	783	704	620	526	451	410
75	299	408	518	629	753	869	970	1033	1072	1088	1088	1063	1013	920	809	687	543	423	356
80	169	375	573	763	958	1135	1284	1378	1436	1459	1458	1421	1344	1205	1034	843	595	385	261
85	0	415	818	1202	1595	1950	2247	2435	2549	2594	2591	2515	2361	2090	1749	1356	801	322	30

Table 2. Average Luminance(cd/sq.m.) for defined C plane,Gamma angle

CIBSE Category	Gamma (deg)	Average Luminance		Patch Luminance	
		maximum calculated	specified maximum	maximum measured	specified maximum
Category 1	55 to 90	2594	200	---	500
Category 2	65 to 90	2594	200	---	500
Category 3	75 to 90	2594	200	---	500

Table 3. Tabulation of Average and Patch Luminance(cd/sq.m.) for defined CIBSE categories

No match

C Range: 0 - 360DEG
C Interval: 30.0DEG
Test Speed: HIGH
Temperature:25.3DEG
Operators:shan
Test Date:2018-09-12

γ Range: 0 - 180DEG
γ Interval: 2.0DEG
Test System:EVERFINE GO-2000A_V1 SYSTEM V1.0.257
Humidity:45.0%
Test Distance:6.950m [K=1.0000]
Remarks:

LUMINOUS DISTRIBUTION INTENSITY DATA

NAME: C-SFR-F21S-HB-D24CC-RGB-56-5050-1M-BTYPE: /	WEIGHT: 0.490KG/M
DIM.: 11.5*29mm	SPEC.: SERIAL No.:
MFR.:	SUR.: 16*1000mm PROTECTION ANGLE: /

Table--1

UNIT: cd

C(DEG) γ (DEG)	0	30	60	90	120	150	180	210	240	270	300	330						
0	9.59	9.59	9.59	9.59	9.59	9.59	9.59	9.59	9.59	9.59	9.59	9.59						
5	9.55	9.51	9.51	9.52	9.54	9.55	9.58	9.59	9.62	9.63	9.61	9.57						
10	9.36	9.30	9.29	9.32	9.35	9.38	9.40	9.49	9.58	9.59	9.51	9.43						
15	9.15	9.08	9.10	9.14	9.18	9.18	9.22	9.35	9.49	9.51	9.40	9.26						
20	8.73	8.66	8.76	8.85	8.84	8.79	8.83	9.02	9.25	9.31	9.15	8.89						
25	8.38	8.32	8.52	8.61	8.60	8.48	8.49	8.74	9.05	9.12	8.92	8.58						
30	7.74	7.74	8.05	8.17	8.17	7.93	7.90	8.23	8.67	8.81	8.53	8.03						
35	7.27	7.33	7.68	7.88	7.82	7.52	7.43	7.82	8.41	8.59	8.24	7.62						
40	6.49	6.64	7.21	7.56	7.31	6.86	6.67	7.16	7.95	8.27	7.78	6.93						
45	5.93	6.17	6.92	7.30	7.04	6.40	6.12	6.69	7.67	8.06	7.49	6.45						
50	5.06	5.40	6.41	6.81	6.56	5.65	5.26	5.97	7.20	7.63	7.03	5.73						
55	4.46	4.94	6.04	6.47	6.21	5.15	4.68	5.47	6.85	7.29	6.66	5.24						
60	3.54	4.29	5.46	5.90	5.63	4.51	3.76	4.77	6.25	6.71	6.05	4.55						
65	2.92	3.84	5.07	5.53	5.25	4.07	3.16	4.31	5.85	6.32	5.63	4.08						
70	2.00	3.15	4.47	4.95	4.65	3.39	2.25	3.60	5.20	5.69	5.00	3.36						
75	1.39	2.71	4.11	4.59	4.29	2.96	1.63	3.14	4.77	5.28	4.57	2.89						
80	0.47	2.12	3.57	4.06	3.73	2.34	0.73	2.46	4.15	4.64	3.95	2.22						
85	0.00	1.76	3.22	3.70	3.38	1.97	0.12	2.06	3.74	4.23	3.57	1.84						
90	0.00	1.33	2.76	3.21	2.89	1.50	0.00	1.54	3.17	3.60	3.00	1.37						
95	0.00	1.11	2.48	2.92	2.38	1.25	0.00	1.28	2.82	3.25	2.69	1.13						
100	0.00	0.84	2.10	2.51	1.86	0.83	0.00	0.80	2.10	2.81	2.26	0.86						
105	0.00	0.71	1.86	2.26	1.58	0.70	0.00	0.70	1.72	2.54	2.03	0.73						
110	0.00	0.56	1.57	1.92	1.26	0.52	0.00	0.57	1.45	2.15	1.70	0.58						
115	0.00	0.48	1.39	1.74	1.07	0.37	0.00	0.41	1.18	1.93	1.52	0.51						
120	0.00	0.37	1.15	1.46	0.90	0.18	0.00	0.23	0.93	1.64	1.28	0.41						
125	0.00	0.30	1.02	1.28	0.67	0.10	0.00	0.13	0.80	1.44	1.13	0.36						
130	0.00	0.19	0.81	1.06	0.47	0.00	0.00	0.02	0.51	1.20	0.95	0.30						
135	0.00	0.12	0.69	0.91	0.31	0.00	0.00	0.00	0.38	1.04	0.84	0.20						
140	0.00	0.04	0.52	0.71	0.12	0.00	0.00	0.00	0.16	0.80	0.69	0.11						
145	0.00	0.00	0.38	0.58	0.03	0.00	0.00	0.00	0.06	0.62	0.58	0.06						
150	0.00	0.00	0.21	0.38	0.00	0.00	0.00	0.00	0.00	0.36	0.39	0.00						
155	0.00	0.00	0.10	0.24	0.00	0.00	0.00	0.00	0.00	0.20	0.27	0.00						
160	0.00	0.00	0.00	0.02	0.00	0.00	0.00	0.00	0.00	0.05	0.15	0.00						
165	0.00	0.00	0.00	0.00	0.00	0.00	0.00	0.00	0.00	0.00	0.05	0.00						
170	0.00	0.00	0.00	0.00	0.00	0.00	0.00	0.00	0.00	0.00	0.00	0.00						
175	0.00	0.00	0.00	0.00	0.00	0.00	0.00	0.00	0.00	0.00	0.00	0.00						
180	0.00	0.00	0.00	0.00	0.00	0.00	0.00	0.00	0.00	0.00	0.00	0.00						

C Range: 0 - 360DEG
C Interval: 30.0DEG
Test Speed: HIGH
Temperature: 25.3DEG
Operators: shan
Test Date: 2018-09-12

γ Range: 0 - 180DEG
γ Interval: 2.0DEG
Test System: EVERFINE GO-2000A_V1 SYSTEM V1.0.257
Humidity: 45.0%
Test Distance: 6.950m [K=1.0000]
Remarks: